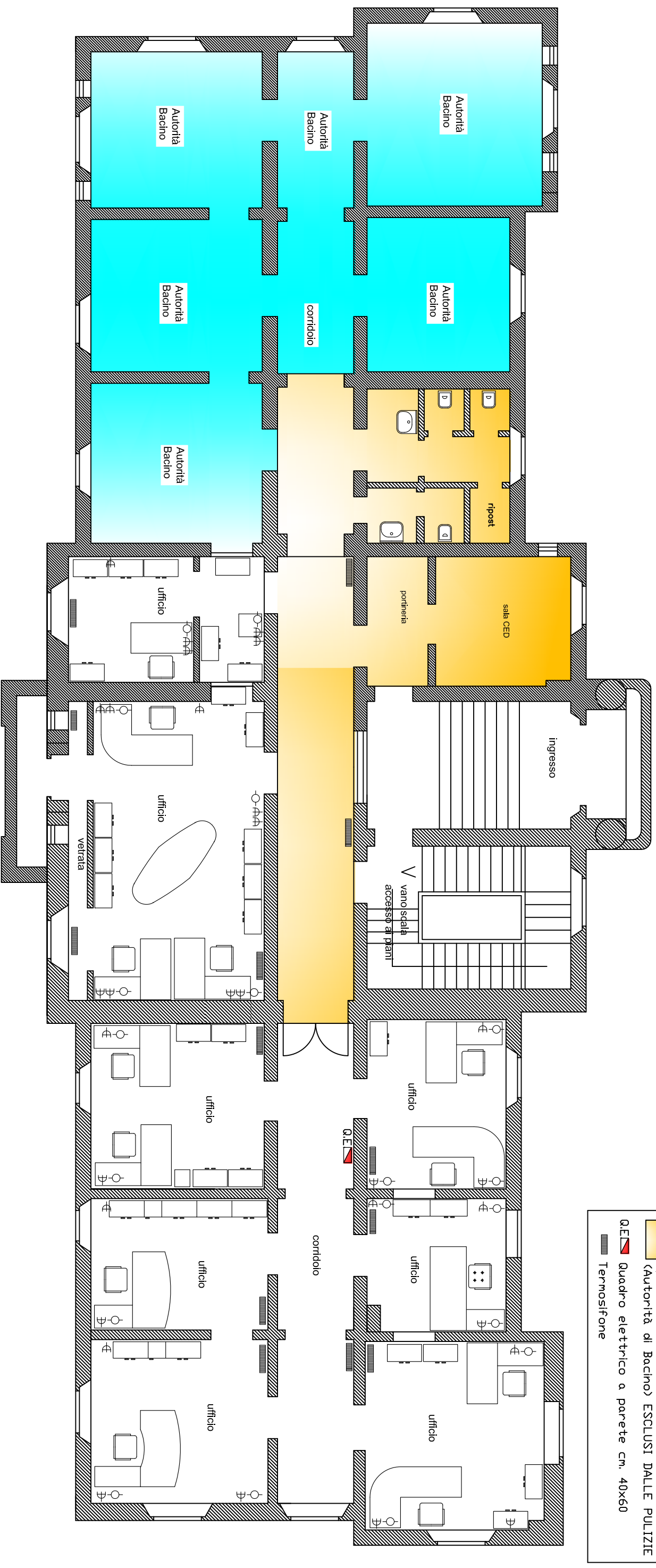


LOCALI ALSIA (da pulire)





Sup. netta mq. 190,36

Corso Umberto

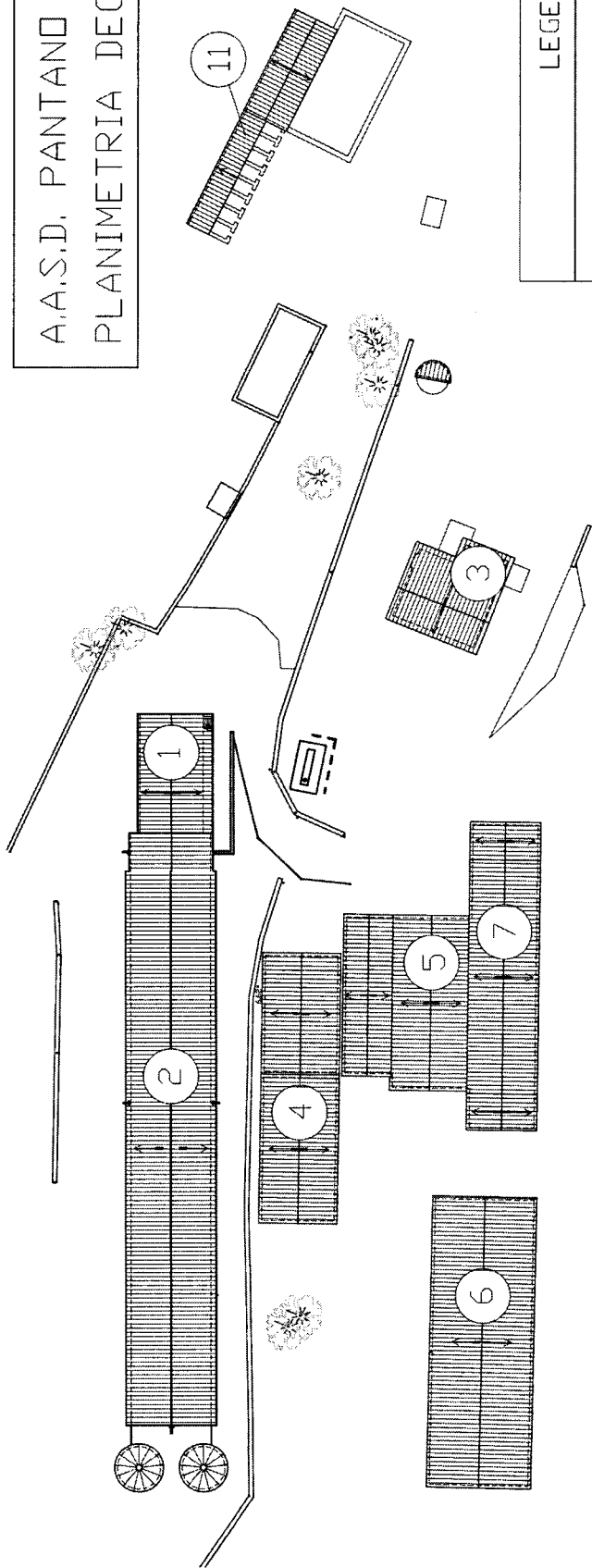
accesso da C.so Umberto



Via Vaccaro

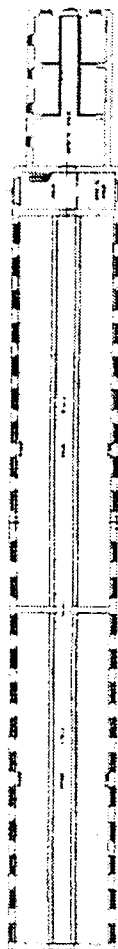
LEGENDA	
	Uffici AUTORITA' DI BACINO
	Spazi in comune con altro Ente (Autorità di Bacino) ESCLUSI DALLE PULIZIE
	Q.E. Quadro elettrico a parete cm. 40x60
	Termosifone

A.A.S.D. PANTANO DI PIGNOLA
PLANIMETRIA DEGLI IMMOBILI



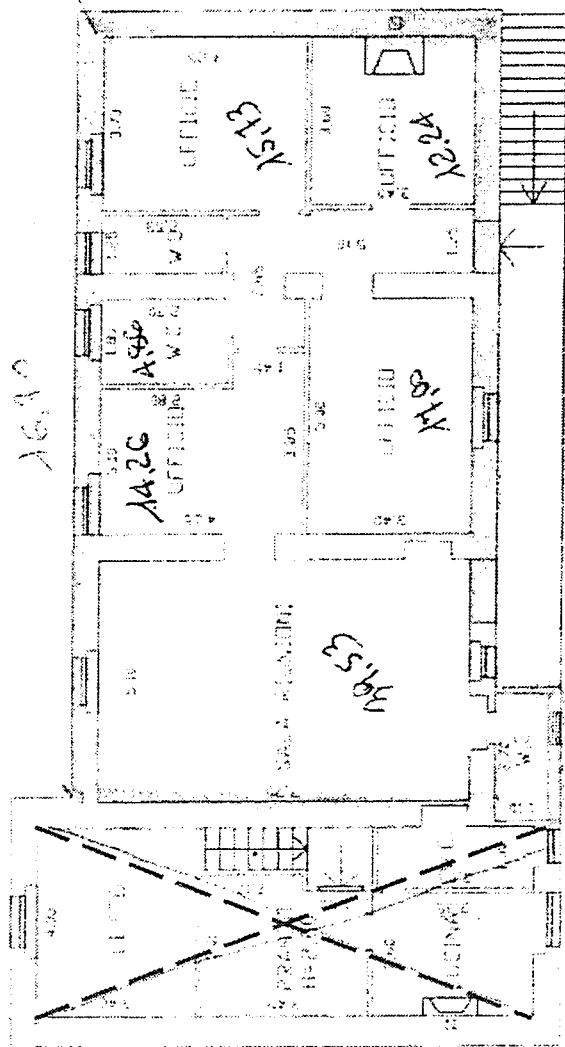
LEGENDA	
①	UFFICI attuali
②	VECCHIA STALLA
③	PALAZZINA ex uffici
④	VECCHI UFFICI
⑤	GARAGE
⑥	TETTOIA FORAGGIO
⑦	EX CASEIFICID - ARCHIVIO attuale
⑧	STALLE
⑨	VECCHIA SALA MUNGITURA
⑩	CABINA ELETTRICA
⑪	VECCHIA PORCILAIA

IMMOBILE 6



Scala 1 500

VETRINA STAL_A

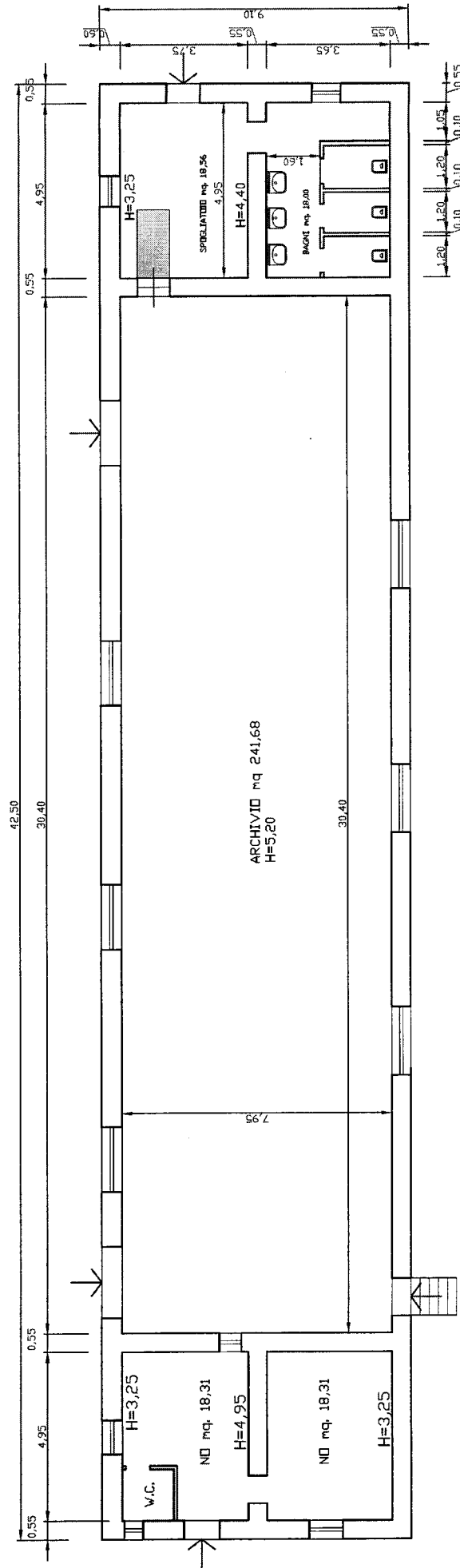


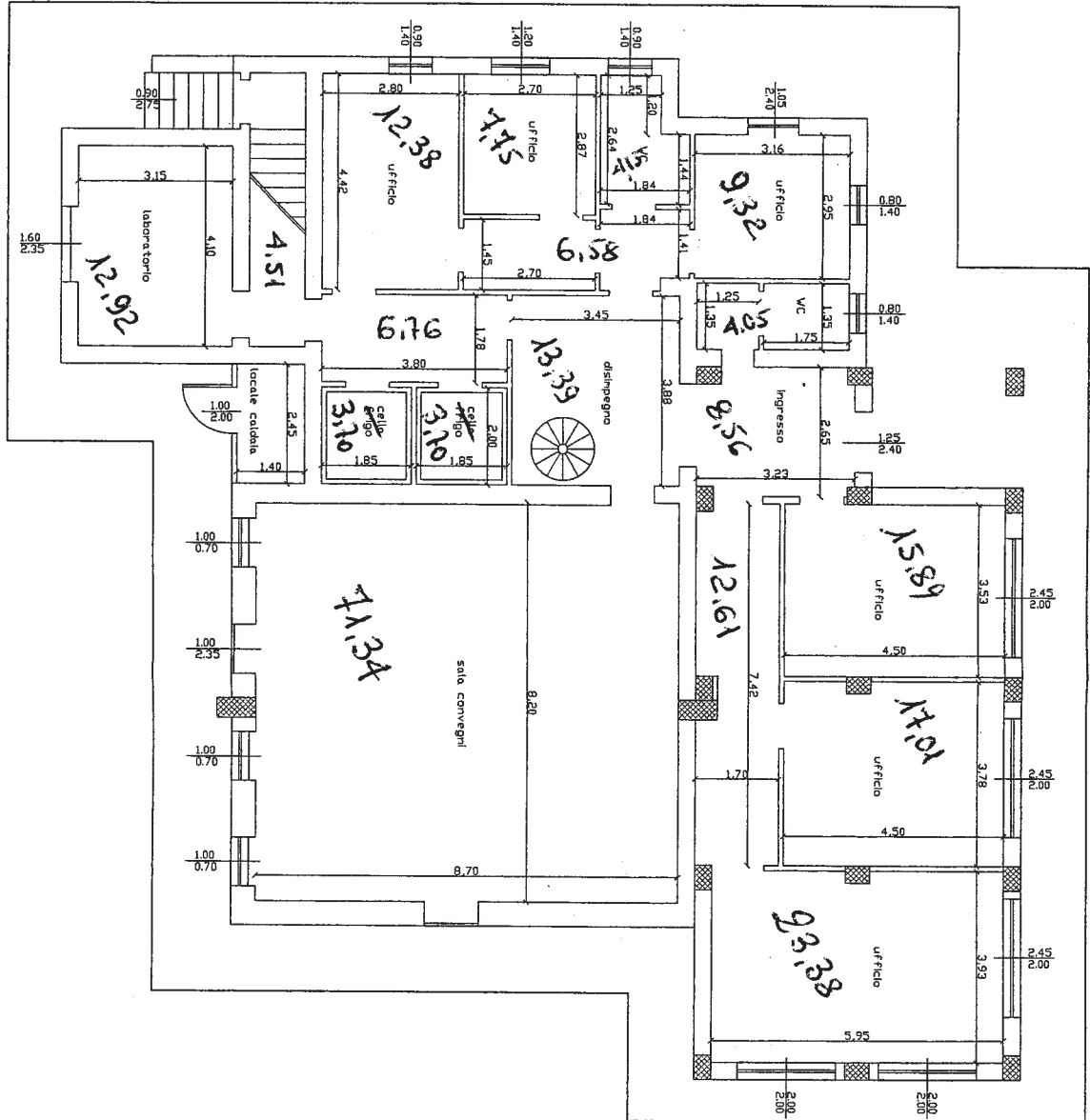
PIANO PRIMO 10 310

Scala 1 100

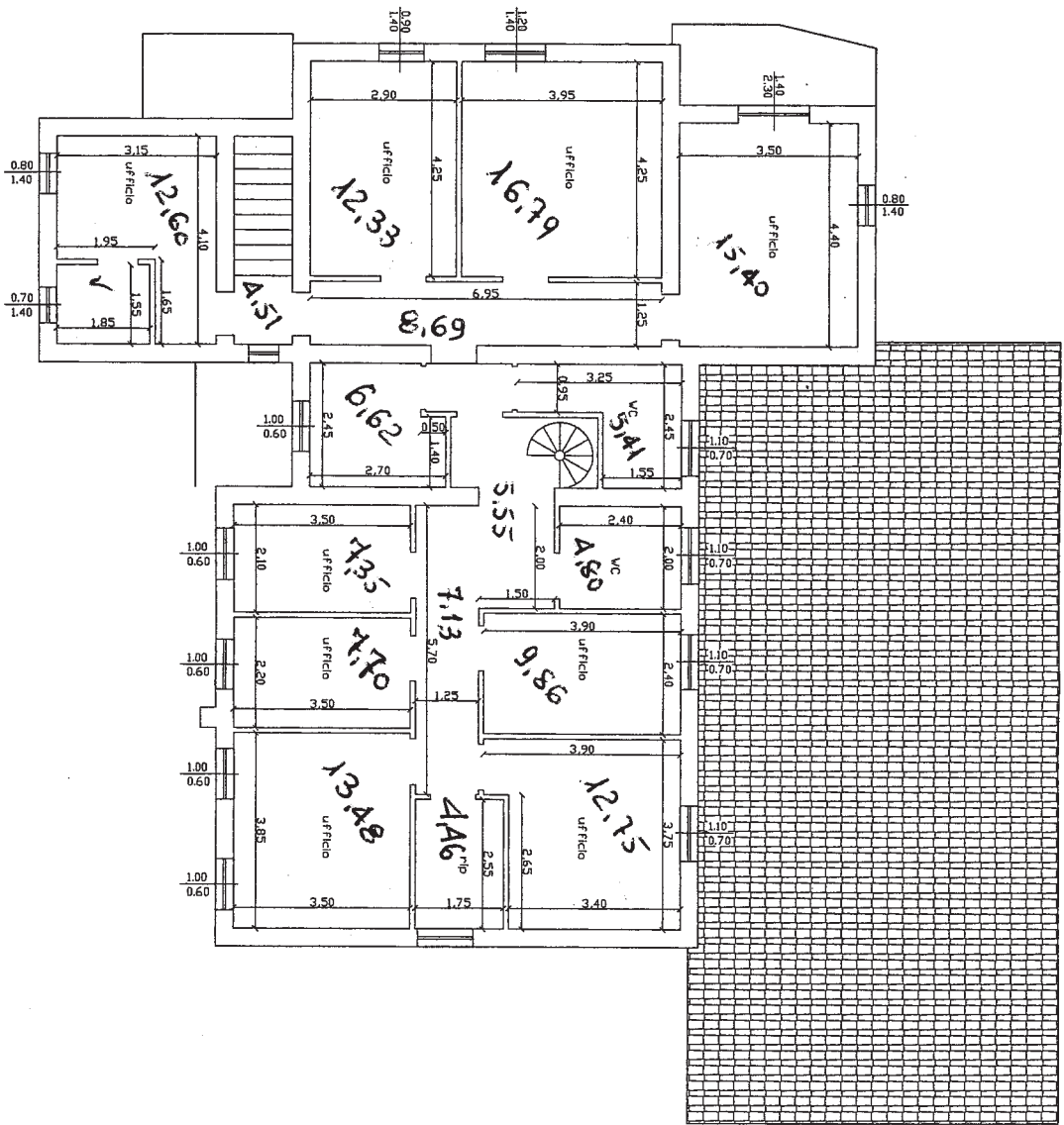
UFFICI 1 ABITAZIONE VETRINA AZIENDA

AASD PANTANO DI PIGNOLA





Scala 1: 100



Rice Jameson